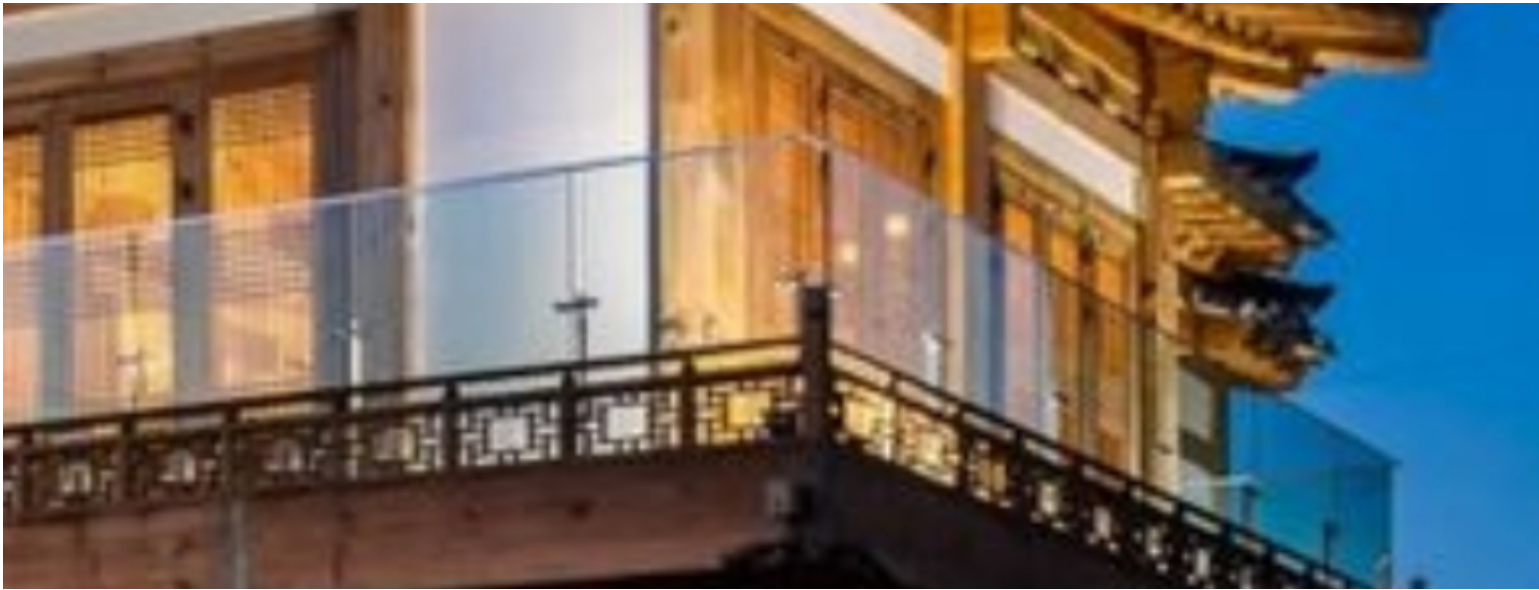


5D4N Experience Seoul (SIC)

**Price per person
from
MYR 4278**



Tour Description

Explore the world with our specially curated travel programs and arrangements. Sedunia Travel specializes in fully personalized travel arrangements to suit each traveling style whether it is Traveling in Group with Like-Minded People with Exclusive Private Arrangements or even Independent Adventures for those wanting to head off the beaten path and explore. Choose from one of our tried and tested classic itineraries or reach out to us to put together a fully tailor-made experience.

Tour Itinerary

Day 1 :- ARRIVE INCHEON - SEOUL

Upon arrival at Incheon International Airport, transfer to the hotel for check-in, free at your own leisure.

Day 2 :- SEOUL CITY TOUR

After breakfast at the hotel, then ready for pick-up at the hotel lobby. Proceed to Gyeongbok Palace with Changing guard ceremony. Continue to visit Bukchon Hanok Village which is home to over 900 traditional Korean houses (hanoks) dated back to Joseon Dynasty. Stop and visit Red pine (shopping stop). Proceed to Gwangjang Market, the oldest and largest traditional market in Korea and a wonderful place to eat Korean street food. Transfer N Seoul Tower visit by Cable Car, an iconic Seoul landmark that provides bird's-eye views of the city. After tour ends, will be drop off at Myeongdong station. Make your own arrangement back to the hotel.

***Pick-up time at pick up point will be changeable (Myeongdong Station / Dongdaemun Station / Hongdae Station) depending number of PAX join the tour. Advance notice will be provided*

***Surcharge will be applied if pax decided not to visit Redpine – USD 70 per pax*

Breakfast

Day 3 :- NAMI ISLAND & PETITE FRANCE SIC DAY TOUR

After breakfast at the hotel, then ready for SIC day tour. Make your own arrangement to the pick-up point (at Myeongdong / Dongdaemun Station). Transfer to Nami Island – famous for its beautiful scenery and filming location for popular K-Drama “Winter Sonata”. Next to visit Petite France – a French-style theme park and filming location for many popular K-Drama and Reality show. After tour ends, will be drop off at Myeongdong station. Make your own arrangement back to the hotel.

Breakfast

Day 4 :- SEOUL – SIC DAY TOUR

After breakfast at the hotel, then ready for SIC day tour. Choose **ONE** of the following SIC day tours below:

A) EVERLAND TOUR

Pick Up at your hotel, transfer and visit Everland Theme Park which is a Korea's largest and perfect amusement park for all ages! Consists of 5 unique theme zones (Global fair, American Adventure, Magic Land, European Adventure and Zootopia) makes it one of must visit place in Korea.

B) LOTTE WORLD TOUR & SEOUL SKY TOUR

Pick Up at your hotel, transfer and visit Lotte World (with free ride ticket) which a major recreation complex divided into an indoor 'Adventure' theme park and a 'Magic Island' outdoor theme park. Move to Seoul Sky Observatory, located at the top of the Lotte World Tower, the world's fifth tallest building standing 123 stories and 555 meters high. As the tallest building in South Korea, it is the only place where you can take in a gorgeous 360-degree view of Seoul. After tour ends, drop off at Myeongdong Station; make your own arrangement back to the hotel.

Breakfast

Day 5 :- SEOUL – DEPARTURE (B)

After breakfast at the hotel, then check-out from hotel. Free at your own leisure till transfer to Incheon International Airport for your departure flight.

Breakfast

Tour Prices

Hotel	Single	Twin	Child (No Bed)	Child (With Bed)	Child With No Bed
New Seoul Hotel Myeongdong / Migliore Myeongdong Hotel / Migliore Myeongdong Hotel or similar	RM 5,938	RM 4,278	RM 4,278	RM 2,168	
Amid Hotel (ex Center Mark) / Sotetsu Myeongdong Hotel / Kukdo Hotel	RM 6,258	RM 4,338	RM 4,338	RM 2,168	

What's included

Destination [South Korea](#)
Departure Location Incheon
Return Location Incheon

Price includes

- complimentary full day Seoul City Tour
- Return airport transfer in SIC basis with English speaking driver by minivan or motor coach
- 4 nights' accommodation with daily breakfast

Price does not include

- Return international flight ticket
- Travel insurance
- Compulsory tipping - USD 5 per person per day (Pay at Korea)
- Others not mentioned

Additional Information

Remarks

Minimum of 2 adults

Validity till June 2024

Peak season surcharge apply on certain dates, to be advice

Sequence of itinerary is subject to change without prior notice

Additional surcharge if request NO SHOPPING STOP

The final price to be confirmed upon booking time

Surcharge will be applied if pax decided not to visit Redpine – USD 70 per pax