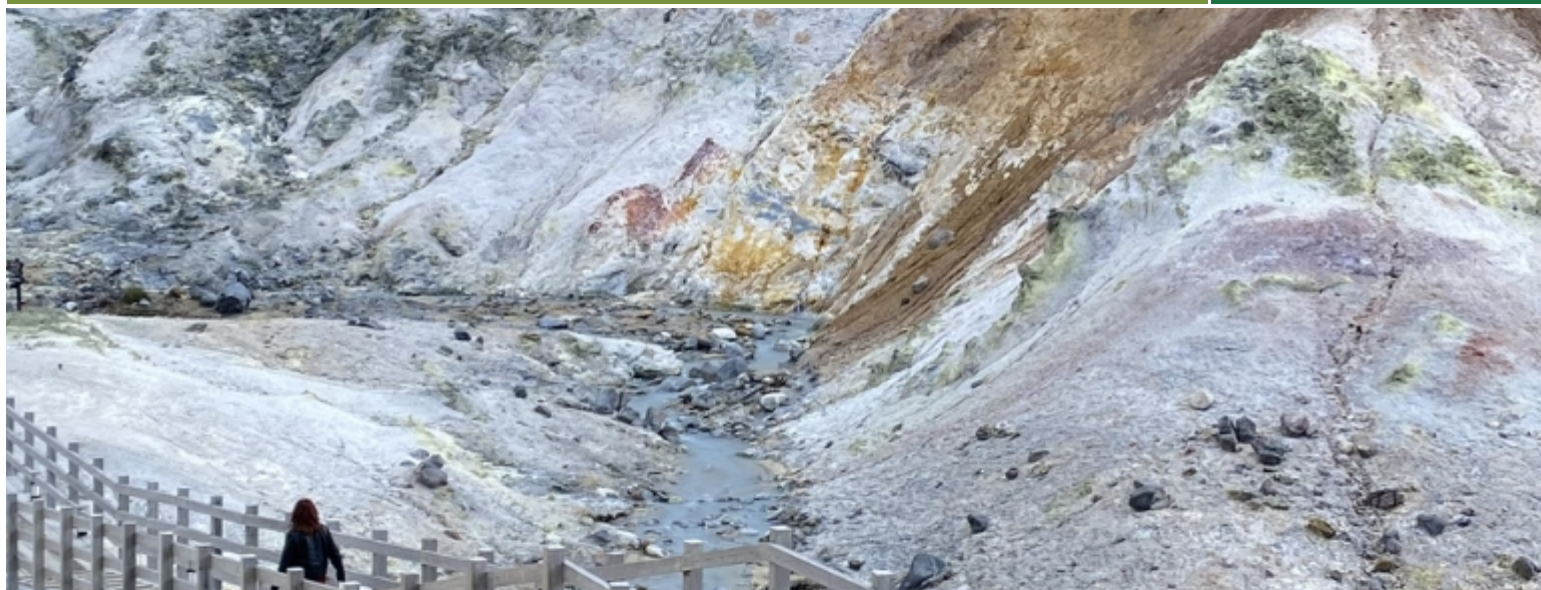


6D5N Blooming Hokkaido Panorama (Private)

Price per person
from
MYR 11410



Tour Description

Embark on a journey of discovery with Sedunia Travel! Experience unique destinations, local culture, delicious cuisine, and unforgettable adventures. Our expert planners will take care of everything. Book now!

Tour Itinerary

Day 1 :- ARRIVAL CHITOSE - AKAN

Upon arrival at Chitose International Airport, meet the driver and proceed to the tour below.

- **Rokkatei Confectionery Republic Garden Factory Tour** ??????????: Get a chance to see how Hokkaido sweets are made and enjoy tasting samples
- **Akan National Park** ??????: Known for its volcanic landscapes, lakes, and forests
- **Ainu Kotan Village** ??????: Experience Ainu culture with traditional crafts, performances, and cultural displays
- **Lake Akan Onsen** ??????: Relax at Lake Akan's hot springs, surrounded by picturesque lake and forest views

Overnight in Akan

Dinner

Day 2 :- AKAN – HIGASHIMOKOTO - SHIBAZAKURA

Breakfast at hotel, proceed to the tour below

- **Higashimokoto Shibazakura Park** ??????: See vibrant moss phlox flowers in full bloom during spring
- **Kamiyubetsu Tulip Park** ??????: Admire the colorful tulip fields, usually in bloom from May to June

Overnight in Asahikawa

Breakfast

Day 3 :- ASAHIKAWA - FURANO - SAPPORO

Breakfast at hotel, proceed to the tour below.

- **Asahiyama Zoo** ?????: Famous for interactive animal exhibits and unique enclosures
- **Asahikawa Ramen Village** ?????: Sample Hokkaido's specialty ramen at this popular culinary spot
- **Biei Blue Pond** ?????: Admire the striking turquoise water of Blue Pond
- **Shirahige Waterfall** ????: A picturesque waterfall flowing into a calm river, surrounded by nature
- **Ningle Terrace** ?????: A charming artisan village nestled in a forest, offering handmade crafts and souvenirs

Overnight in Sapporo

Breakfast

Day 4 :- SAPPORO - OTARU - LAKE TOYA

Breakfast at hotel, proceed to the tour below.

- **Otaru Canal** ????: Scenic canal lined with historic warehouses and charming streets
- **Kitaichi Glass** ????: A famous glassware workshop and store showcasing Hokkaido craftsmanship
- **Music Box Museum** ?????: Explore a museum dedicated to music boxes and mechanical instruments
- **Lake Toya Observatory** ?????: Panoramic views of Lake Toya and surrounding landscapes
- **Showa Shinzan Bear Ranch** ?????: Visit and interact with Hokkaido brown bears in a safe environment
- **Lake Toya Onsen** ?????: Relax in hot springs overlooking Lake Toya

Overnight in Toya

Breakfast

Day 5 :- LAKE TOYA - NOBORIBETSU - SAPPORO

Breakfast at hotel, proceed to the tour below.

- **Lake Toya** ???: Scenic crater lake surrounded by mountains and forests
- **Noboribetsu Hell Valley** ?????: Volcanic valley with hot steam vents, sulfurous streams, and dramatic landscapes
- **Mitsui Outlet Park** ?? **OUTLET PARK** ?????: Shop for international and local brands at a popular outlet mall
- **Tanukikoji Shopping Street** ?????: Historic shopping street in central Sapporo with shops, restaurants, and souvenirs

Overnight in Sapporo

Breakfast

Day 6 :- DEPARTURE SAPPORO

Breakfast at hotel, free at your own leisure until transfer to the airport for your flight departure

Breakfast

Tour Prices

Category	Travel Period	Twin	Single	Child with Bed	Child No Bed
Standard	Now till 31 December 2026	RM 11,410	RM 14,320	RM 11,410	RM 8,560
Superior	Now till 31 December 2026	RM 11,940	RM 14,390	RM 11,940	RM 8,960

What's included

Destination [Japan](#)
Departure Location Chitose
Return Location Sapporo
Price includes

- 5 nights accommodation with daily breakfast
- Return airport transfer in PRIVATE basis
- Sightseeing, meal and entrance fee as indicated in itinerary
- Services of English speaking driver cum guide

Price does not include

- Return International air ticket
- Travel insurance
- Optional Tours
- Weekend & peak season surcharge
- Others not mentioned

Additional Information

Remarks

Travel period: Now until 31 December 2026

Minimum 2 adults to go (Private Basis)

Subject to the rooms and tours availability

Peak season surcharge to be confirmed upon booking time

Final price to be confirm upon booking time

Maximum 10 hours charter car every day, an overtime fee of JPY 5,000 per hour will be charged

Sequence of the itinerary is subject to the local arrangement

SPECIAL PROMOTION

2 PAX: SAVE RM 500 PER PERSON

6 PAX & ABOVE: SAVE 50% PER PERSON